



TOTALLY wicked®

orbis

USER MANUAL

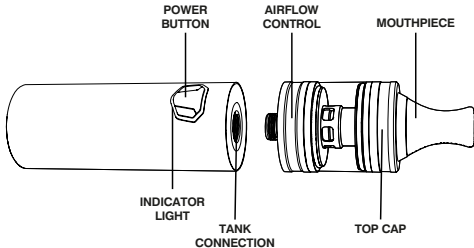


CONGRATULATIONS
ON PURCHASING YOUR

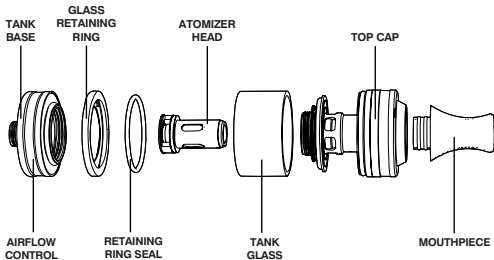
**TOTALLY WICKED
ORBIS
ELECTRONIC
CIGARETTE KIT**



TOTALLY WICKED ORBIS



TOTALLY WICKED ORBIS



QUICK START GUIDE

If you are familiar with using e-cigarettes, follow the quick start guide below to be vaping in minutes:

- Prime the atomizer head
- Fill the tank
- Switch the Orbis on (5 clicks of the power button)
- Press the power button and inhale
- Charge the battery (possibly not shipped with a full charge)

Detailed descriptions of these steps and more are given in the full user guide

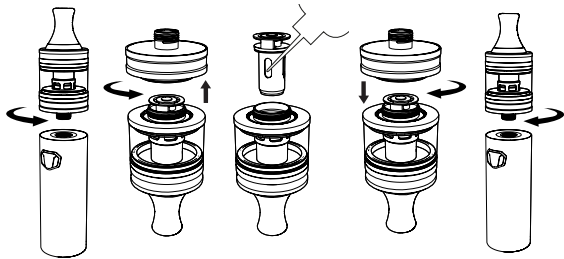
USING YOUR ORBIS

Priming the Atomizer Head

It is important to “prime” a new atomizer head before first use. Failure to do so can damage the atomizer head.

Grip the airflow control and unscrew the tank from the battery. Holding the tank's glass tube, unscrew the base from the tank. Remove the atomizer head by pulling straight out, drip a few drops of e-liquid onto the cotton wick through the openings on the sides of the atomizer head, and re-insert into the tank. Screw the base back onto the tank and refit to the battery.

Note: After priming a new atomizer head and filling the tank, it is recommended to wait 5 minutes before vaping to ensure the atomizer head is fully saturated.



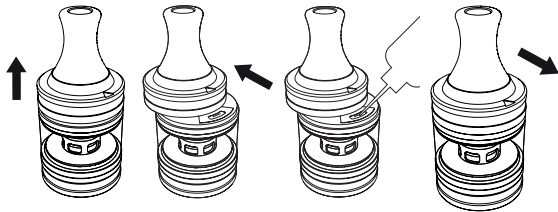
USING YOUR ORBIS

Filling the Tank

Pull the top of the tank upwards and slide the top cap open by pushing firmly in the direction indicated by the arrow on the top of the tank. Insert the filling nozzle of your e-liquid bottle through the slit in the silicone filling seal, and fill the tank, being careful not to overfill. Slide the top cap shut after filling.

Note: To avoid leaking, ensure an air gap of around 2mm remains above the e-liquid after filling.

USING YOUR ORBIS



USING YOUR ORBIS

Atomizer Head Lifespan:

Atomizer heads do not last forever and need to be replaced periodically. Lifespan is generally from a few days to several weeks, depending on power used, vaping style, flavour and type of e-liquid. A slight burnt taste, general loss of vapour production, or a reduction in flavour intensity can all be indicators that the atomizer head requires replacement.

Switching On and Off:

To switch the Orbis on or off, quickly press the power button five times. The indicator light will flash five times when switched on or off.



USING YOUR ORBIS

Vaping:

Press and hold the power button as you gently inhale the vapour, releasing the power button when you have finished inhaling. The indicator light will illuminate while the power button is held down, with its colour showing battery condition. See **Battery Life Indication** to see what each colour means.

Adjusting Airflow:

If you find airflow too airy or too tight, rotate the airflow control to expose less or more of the slit or holes at each end of the adjuster travel. The holes will give a finer adjustment, while the slit allows more open airflow. Experiment to find your preference.

USING YOUR ORBIS

Changing Output Modes:

The Orbis battery has 3 different power modes: High, Medium and Low. To switch between the power modes, press the power button three times in quick succession; the indicator light will illuminate Green for high power mode, Blue for medium power mode and Red for low power mode. To check which mode is active, press the power button twice, and the indicator will illuminate to show the current mode momentarily.



E-liquid Level:

To prevent the atomizer head from becoming dry and burning prematurely, ensure the tank remains at least ¼ full.

USING YOUR ORBIS

Battery Life Indication:

When the power button is pressed in normal use, the indicator light will display the colours below, dependent on the device's level of charge.

Light Condition	Battery Percentage
Green	100% – 60%
Blue	59% – 20%
Red	≤19%

USING YOUR ORBIS

Charging the Battery

Insert the supplied charge cable into the Orbis charging port, and connect the other end of the charge cable to a USB port or suitable wall adaptor. The indicator light will illuminate red while charging. When fully charged, the indicator light will switch off. The Orbis can be used normally while charging.

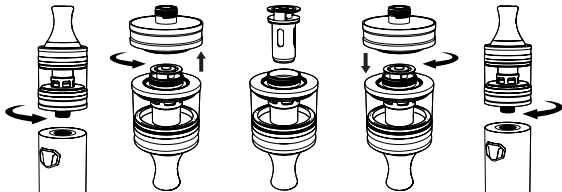


Replacing the Atomizer Head

Unscrew the tank from the battery, remove the base of the tank by unscrewing. Pull out the old atomizer head and replace with a new one after following the instructions in **Priming the Atomizer Head**. Screw the base back onto the tank and refit to the battery.

USING YOUR ORBIS

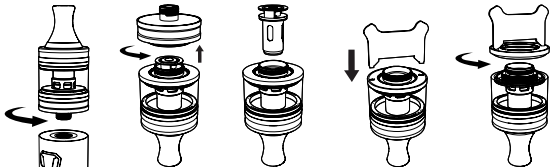
Note: After priming a new atomizer head and filling the tank, it is recommended to wait 5 minutes before vaping to ensure the atomizer head is fully saturated.



USING YOUR ORBIS

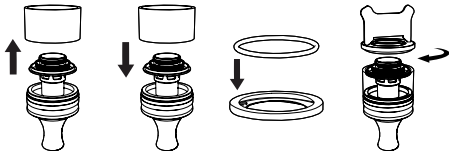
Replacing the Tank Glass

The tank glass for the Orbis can be replaced using the special spanner provided in the kit. To change the glass, remove the tank from the battery and unscrew the base. Remove the atomizer head from the tank and insert the prongs of the spanner in the two small holes now exposed. Insert the prongs of the spanner in the two small holes now exposed.



USING YOUR ORBIS

Holding the tank, turn the tool anti clockwise until the retaining ring is completely unscrewed, and remove the glass, taking care not to lose the retaining ring seal. Replace the glass section, ensure the retaining ring seal is correctly seated in the groove in the glass retaining ring, and refit the glass retaining ring, tightening with the spanner. Refit the atomizer head and tank base.



PROTECTIONS

Atomizer Head Protection

If the power button is held down for longer than 15 seconds while vaping, the indicator light will flash 10 times and the Orbis will refuse to power or produce any vapour. Releasing the power button allows normal operation to resume.

Low Voltage Protection

If battery voltage drops to 3.3 volts, the indicator light will flash 20 times and the Orbis switch off. Charge the Orbis using the procedure outlined in **Charging the Battery** to allow normal operation to resume.

Incompatible Atomizer Head Resistance

If the atomizer head resistance is below 0.3ohm, the indicator light will

PROTECTIONS

quickly flash 5 times when pressing the power button. If the atomizer head resistance exceeds 3.0ohm, the indicator light will flash slowly when pressing the power button. Replacing the atomizer head with one of a compatible resistance above 0.3ohm and below 3.0ohm will allow normal operation to resume.

Short Circuit Protection

If an atomizer short circuit occurs, the indicator light will flash 5 times and the Orbis will switch off. Replace the atomizer head by following the steps in **Replacing the Atomizer Head**, then follow the procedure in **Charging The Battery** to restore power and allow normal operation to resume.

KIT CONTENTS

- 1 x Orbis battery
- 1 x Orbis tank
- 1 x GT-M 0.6ohm
atomizer head (fitted)
- 1 x GT-M 0.6ohm
atomizer head (spare)
- 1 x USB cable
- 1 x User manual
- Spare parts

ADDITIONAL PRODUCT INFORMATION

There are no reported medical side effects with this product. If you believe you experience a side effect, please contact the manufacturer.

SPECIFICATIONS

Dimensions: 22mm (diameter) x 104mm (length)

Battery capacity: 1100mAh

Max charging current: 1.0A

Tank capacity: 2ml

Atomizer head type: GT atomizer heads

Maximum power: 25W

Maximum filling nozzle diameter: 3.0mm

PRODUCT STORAGE AND BATTERY PRECAUTIONS

- Store the Orbis kit and its accessories away from children when not in use.
- Please only use the charging cable provided.
- Please dispose of dead batteries in accordance with your country's appropriate legislation.
- Do not charge the battery in a damp environment, or in temperatures under 0°C or above 45°C.
- Do not use the device in temperatures under -10°C or above 60°C.
- Do not carry batteries in a pocket or bag with other metallic objects.
- Do not attempt to repair a faulty Orbis battery as these are sealed units with no serviceable parts. Attempted repairs will void the warranty.

WARRANTY

The Orbis kit components have a six month parts warranty, with the exception of Atomizer Heads, which are consumable items and covered by “dead on arrival” warranty only. The USB cable supplied has a 12 month warranty. If any parts are found to be faulty within this time please contact our customer service team, whose details are on the back page of this booklet and we will arrange for a replacement. We may require the goods to be returned for further investigation.

orbis

PiLLbOX 38

Manufactured in China under the authority of Pillbox38 UK Ltd,
Stancliffe Street, Blackburn, Lancashire, BB2 2QR.



Tel 01254 692244
www.totallywicked.co.uk



Tel 0941-78447082
www.totallywicked.de

