

PIPE X

ELECTRONIC PIPE



TOTALLY wicked®

USER MANUAL

CONGRATULATIONS ON PURCHASING YOUR

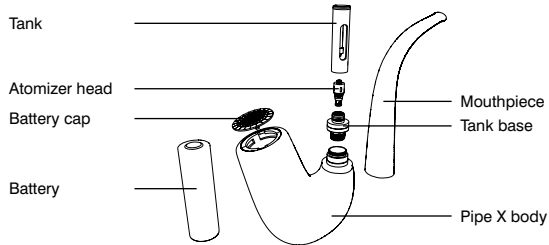
TOTALLY WICKED PIPE X ELECTRONIC CIGARETTE

If you are familiar with using e-cigarettes, follow the quick start guide to be vaping in minutes.

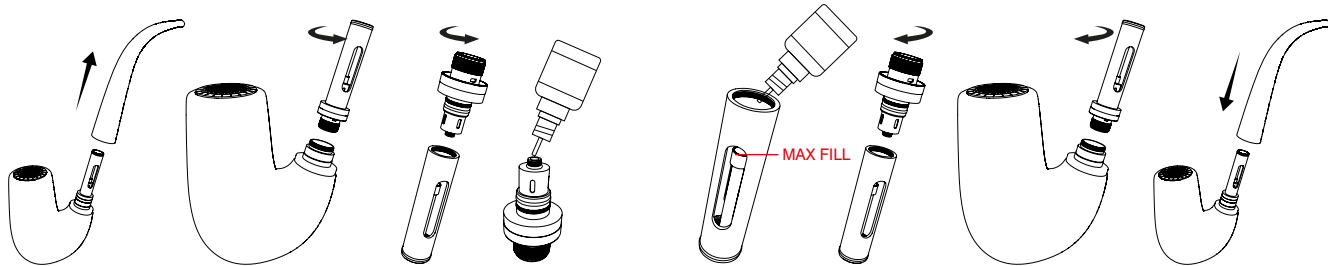
- Prime the atomizer head.
- Fill the tank.
- Insert the battery (NEGATIVE SIDE DOWN AND TOUCHING THE SPRING)
- Inhale
- Charge the battery (possibly not shipped with a full charge).

Detailed descriptions of these steps and more are given in the following pages of this manual.

THE TOTALLY WICKED PIPE X



PRIMING AND FILLING



PRIMING AND FILLING

It is important to “prime” a new atomizer head before first use. Failure to do so can cause the atomizer coil to overheat, resulting in a burnt taste and sometimes irreversible damage to the atomizer head requiring early replacement.

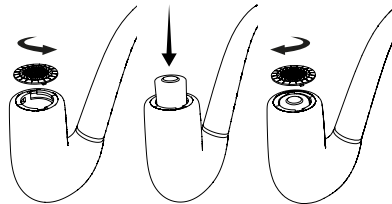
Remove the mouthpiece by pulling straight off, and unscrew and remove the tank assembly from the pipe body. Unscrew the tank base to reveal the atomizer head. Prime the atomizer head by dripping a few drops of e-liquid on the side e-liquid inlets of the atomizer head. Fill the tank to

just below the height of the central air tube as shown in the diagram. Avoid allowing liquid into the central air hole. Screw the tank base back into the tank, then screw the tank back on to the pipe body. Refit the mouthpiece by pushing firmly over the tank, being careful to ensure correct orientation of the alignment tab.

Note: After priming a new atomizer head and filling the tank with e-liquid, it is recommended to wait 5 minutes to ensure the atomizer head is fully saturated with e-liquid.

FITTING THE BATTERY

To fit the battery, invert the Pipe X and turn the battery cap anti-clockwise until it falls free. Insert the battery into its housing negative side first, push the top cap down so that its tabs align with the cut outs in the Pipe X body, and holding down, rotate through one quarter turn clockwise. The LEDs will flash 3 times to indicate successful insertion.



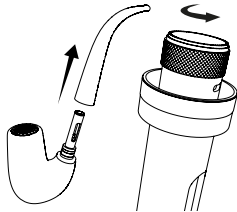
USING YOUR TOTALLY WICKED PIPE X

Vaping

Draw gently but firmly on the Pipe X mouthpiece so that the LED lights up.

Adjusting Airflow

If you find the air flow too airy or too tight while vaping, remove the mouthpiece from the Pipe X and unscrew the tank assembly. Located at the bottom of the base is an adjustable airflow ring. Rotate the air flow control ring clockwise to open, and anticlockwise to close, until you find your preferred setting. Airflow adjustment can be checked by drawing on the tank assembly while it is removed from the Pipe X.



USING YOUR TOTALLY WICKED PIPE X

E-liquid Level

To prevent the atomizer head from becoming dry and burning prematurely, ensure the amount of E-liquid inside the Pipe X does not drop below the fluid feed holes located on the sides of the atomizer head. The mouthpiece must be removed to make the fluid level visible through the glass windows of the tank.

Low Battery

When the Pipe X reaches a voltage of 3.4V, the LED will flash 10 times. This indicates the Pipe X has insufficient battery voltage to deliver power. Charge the battery using the steps outlined in *"Charging the Battery"* to allow normal operation to resume.

Charging The Battery

The Totally Wicked Pipe X is charged using an appropriate 18650 Li Ion battery charger. Follow the instructions included with the charger.

USING YOUR TOTALLY WICKED PIPE X

Changing The Atomizer Head

To install a new atomizer head follow the process shown in “*Priming and Filling*”, and unscrew the atomizer from the tank base. Replace only with the appropriate Totally Wicked PX atomizer head.

Reminder: After priming a new atomizer head and filling the tank with e-liquid, it is recommended to wait 5 minutes to ensure the atomizer head is fully saturated with e-liquid.

Atomizer Head Lifespan

Atomizer heads do not last forever and need to be periodically replaced. The lifespan of an atomizer head can vary from several days up to several weeks. Factors affecting lifespan include wattage, vaping style, flavour and type of E-liquid. Indicators that the atomizer head may require replacement include a slight burnt taste, general loss of vapour production or a reduction in flavour intensity.

PROTECTIONS

Short Circuit Protection

If an atomizer short circuit occurs, the LED will flash 4 times, the Pipe X will not provide power to the atomizer or produce any vapour. Replacing the atomizer head should allow normal operation to resume. To replace the atomizer head follow the steps outlined in *Changing The Atomizer Head*.

No Atomizer Detected Protection

If no atomizer is detected, the LED will flash 5 times and the Pipe X will not provide power to the atomizer or produce any vapour. Ensure the atomizer head is fully screwed into the base of the tank, then fit the tank back onto the battery. If the “No Atomizer” sequence continues, replacing the atomizer head should allow normal operation to resume. Follow the steps outlined in *Changing The Atomizer Head*.

PROTECTIONS

Atomizer Head Protection

After 10 seconds of continuous operation, power to the atomizer will be cut off and the LED will flash 10 times. The device will resume normal operation on the next use.

Cleaning And Maintenance

The Totally Wicked Pipe X body, mouthpiece and tank connection threads can be cleaned by wiping down with tissue or a dry cloth. The Pipe X mouthpiece, tank and base can be cleaned under warm running water when disassembled. Allow the tank to fully dry before refitting the atomizer head.

Note: Do not attempt to clean the atomizer head with water. Do not submerge the Pipe X body in water or allow it to get wet.

KIT CONTENTS

1 x Pipe X
1 x PX 0.7ohm atomizer head (fitted)
1 x PX 0.7ohm atomizer head (spare)
1 x Leather Pipe X stand
1 x User manual
Spare parts

SPECIFICATIONS

Dimensions: 158mm (height) x 45mm (width) x 120mm (depth)

Weight: 223g with battery fitted

Battery Capacity: Single 18650

Thread Type: Proprietary connection

Atomizer activation: Automatic

PRODUCT STORAGE AND BATTERY PRECAUTIONS

- Store the Pipe X e-cigarette and its accessories away from children whilst not in use.
- Please dispose of dead batteries in accordance with your country's appropriate legislation.
- Do not charge the battery in a damp environment, or in temperatures under 0°C or above 45°C.
- Do not use the device in temperatures under -10°C or above 60°C.
- Do not carry batteries in a pocket or bag with other metallic objects.
- Do not attempt to repair a faulty Pipe X body or its battery, as these are sealed units with no serviceable parts. Attempted repairs will void the warranty.

WARRANTY

Totally Wicked Pipe X components have a 28-day parts warranty with the exception of atomizer heads which are consumable items and are covered by our 'Dead on Arrival' warranty only. If any parts are found to be faulty within this time please contact our customer service team, whose details are on the back page of this booklet and we will arrange for a replacement. We may require the goods to be returned for further investigation.

Additional product information

There are no reported medical side effects with this product. If you believe you experience a side effect, please contact the manufacturer.

PIPE X

ELECTRONIC PIPE

Manufactured in China
under the authority
of Pillbox38 UK Ltd,
Stancliffe Street,
Blackburn, Lancashire,
BB2 2QR.



Tel 01254 692244
www.totallywicked.co.uk



Tel 1(888) 761-9425
www.totallywicked.com



Tel 0941-78447082
www.totallywicked.de

PILLBOX 38

