



TOTALLY wicked®

PSYCHE

ELECTRONIC CIGARETTE KIT

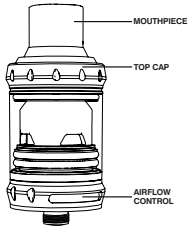
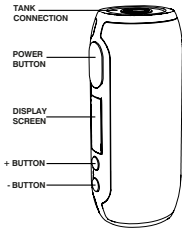
USER MANUAL



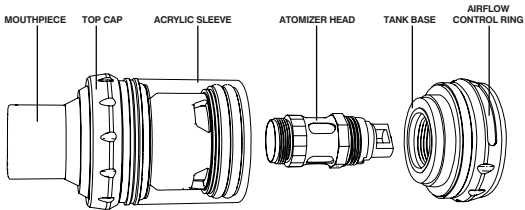
CONGRATULATIONS
ON PURCHASING YOUR

**TOTALLY WICKED
PSYCHE
ELECTRONIC
CIGARETTE KIT**

THE TOTALLY WICKED PSYCHE



THE TOTALLY WICKED PSYCHE



QUICK START GUIDE

If you are familiar with using e-cigarettes, follow the quick start guide below to be vaping in minutes:

- Prime the atomizer head.
- Fill the tank.
- Switch the Psyche on (5 clicks of the power button).
- Set the Psyche to 15 watts.
- Press and hold the power button and inhale.
- Charge the battery (possibly not shipped with a full charge).

Detailed descriptions of these steps and more are given in the full user guide.

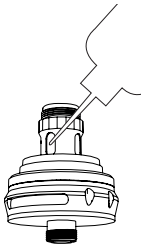
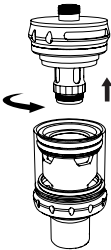
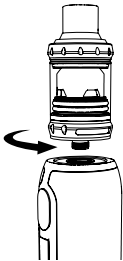
USING YOUR PSYCHE

Priming the Atomizer Head

Note: It is important to “prime” a new atomizer head before first use. Failure to do so can cause the atomizer coil to overheat, leading to an unpleasant taste and sometimes irreversible damage to the atomizer head.

Remove the Rialto tank from the Psyche by unscrewing. Invert the Rialto tank and unscrew the base. Drip a few drops of e-liquid on each of the four e-liquid inlets on the sides of the atomizer head, and into its central hole to fully wet the wicking material.

USING YOUR PSYCHE



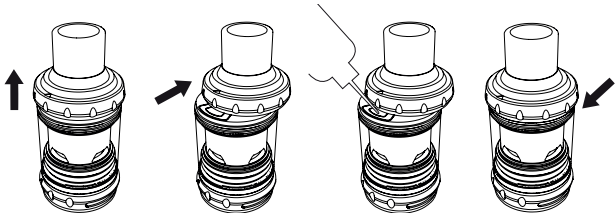
USING YOUR PSYCHE

Filling the tank

Lift up the top section of the tank up and slide in the direction indicated by the arrow. Insert the e-liquid filling nozzle into the fill hole and fill the tank, being careful to leave an air gap of approximately 2mm. Slide the top of the tank back into place until there is an audible click as it drops back into its original position.

Note: After priming a new atomizer head and filling the tank, it is recommended to wait 5 minutes to ensure the atomizer head is fully saturated with e-liquid.

USING YOUR PSYCHE



USING YOUR PSYCHE

Power on and off

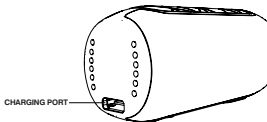
Press the power button 5 times in quick succession to turn the Psyche on. To turn the device off, again press the power button 5 times repeatedly.

Vaping

Press and hold the power button as you inhale the vapour. A puff timer will be displayed on screen.

Charging the battery

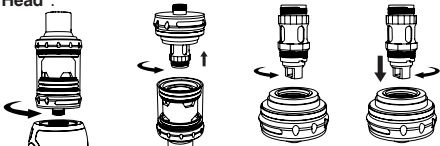
To charge the battery, connect the supplied charge lead into a suitable USB connection port, the battery icon on screen will begin to flash with a bolt icon until fully charged.



USING YOUR PSYCHE

Changing the atomizer head

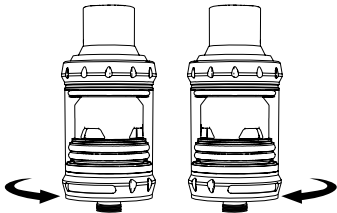
To change the atomizer head in the Rialto tank, remove the Rialto tank from the Psyche by unscrewing. Unscrew the base of the tank. Remove the atomizer head from the base by unscrewing, and insert a new atomizer head. After fitting a new atomizer head, remember that it will need priming as described in the section “**Priming the Atomizer Head**”.



USING YOUR PSYCHE

Adjustment of airflow:

To adjust the airflow to your personal preference, rotate the airflow control ring located at the bottom of the tank. The more area exposed behind the slots in the airflow ring, the more open the air draw will be.



USING YOUR PSYCHE

Setting the wattage:

The Psyche has adjustable wattage that can be set from 1 – 80 watts. Use the adjustment buttons to increase or decrease the wattage on the battery. The fitted atomizer head can be used from 15 to 30 watts. For the best balance of flavour and vapour production we suggest a starting point of 15 watts, which you can then adjust in small increments to find your favourite setting.

Wattage adjustment lock:

The Psyche's wattage adjustment can be locked to prevent the wattage from accidentally being altered during use. While the Psyche is powered on, press the up and down adjustment buttons simultaneously for 3 seconds. The screen will display "Lock". Repeating this process will return the device to normal operation, and the screen will display "UnLock".

USING YOUR PSYCHE

Rotating the display:

Pressing the up and down buttons simultaneously for 3 seconds when the Psyche is powered off will rotate the screen display through 180°. This can be helpful if you are left-handed.

Short circuit protection

If a short circuit occurs whilst the power button is pressed, the screen will display "ATOMIZER SHORT". Replacing the atomizer head should allow normal operation to resume. Follow the steps outlined in "**Changing the Atomizer Head**".

Atomizer protection

If the power button is held down for longer than 10 seconds, the device will stop

USING YOUR PSYCHE

producing any vapour. A message will appear on screen stating “Over 10s” and the device will power off. 5 clicks of the power button will turn the device back on and allow normal operation to resume.

Note: It is possible to change the maximum vaping time between 5, 10 and 15 seconds, or to turn this function off entirely. See “Advanced Functions” for more information.

Dry Burn Protection

The Psyche features automatic Dry Burn Protection (DBP) technology, which prevents atomizer heads from prematurely burning when the e-liquid level is low. This technology is only active with the ML-S 0.6ohm atomizer head.

ADVANCED FUNCTIONS

RETURN



DISPLAY



STEALTH



PREHEAT



VAPING TIMEOUT



VERSION



BATTERY VOLTAGE



ADVANCED FUNCTIONS

The Psyche has a number of advanced functions that can be activated, adjusted or turned off entirely. They are functions that you do not necessarily need, and are consequently held in a hidden menu. If you are not the sort of person that wants to worry about this sort of detail, you can ignore them and use the standard factory settings. However, if you are the sort of person that wants to fully customise your vaping experience, read on!

To enter the advanced function menu press the power button and the up button simultaneously for 3 seconds. You can then use the up and down buttons to scroll along the display and access each function. The first function shown is the **Return** symbol. Pressing the power button with this symbol highlighted, or simply waiting 10 seconds while taking no action, will exit the menu and return the Psyche to normal operation.

ADVANCED FUNCTIONS

Display information:

The Psyche can display a choice of a puff counter, total vaping time or voltage output beneath the atomizer resistance reading. Use the up and down buttons to select the **Display** icon, then press the power button. You can then use the up and down buttons to choose your preferred display information, and select it by pressing the power button. Should you wish to reset the puff counter or the total vaping time, pressing the up button for 3 seconds will set the selected counter to zero. Pressing the power button will return the Psyche to the advanced menu.

ADVANCED FUNCTIONS

Stealth mode:

The Psyche is equipped with provision for “stealth mode”, where normal use will not activate the screen, but a short press of the power button will allow the display to function normally. Pressing the power button when the **Stealth** icon is highlighted allows stealth mode to be turned on or off, using up and down buttons to highlight, and power button to select.

ADVANCED FUNCTIONS

Preheat

The Psyche's preheat function allows the atomizer head to heat up quickly by providing additional power for a short period as the power button is pressed. To set the preheat, access the menu by holding the up adjustment button and power button simultaneously. Pressing the power button when the **Preheat** icon is highlighted allows you to choose your preferred pre-heat power (Pwr) and heating duration (Dura) up to 2 seconds. Use these setting cautiously, as preheat power much higher than you are normally using can cause damage to your atomizer head. Setting the preheat duration to zero (this is the default setting) disables the preheat function. Preheat power is initially set at 30W.

ADVANCED FUNCTIONS

Vaping timeout:

The maximum vaping time on the Totally Wicked Psyche can be changed between 5, 10 or 15 seconds, and can also be turned off. Selecting the **Vaping timeout** icon allows settings to be selected.

Version:

Selecting the **Version** icon allows the current hardware and firmware versions to be displayed.

Battery Voltage:

Selecting the **Battery Voltage** icon allows the current internal battery cell voltage to be displayed.

KIT CONTENTS

- 1 x Psyche battery
- 1 x Rialto tank
- 1 x ML-S 0.6ohm atomizer head (fitted)
- 1 x ML-S 0.6ohm atomizer head (spare)
- 1 x USB-C cable
- 1 x User manual
- Spare parts

ADDITIONAL PRODUCT INFORMATION

There are no reported medical side effects with this product. If you believe you experience a side effect, please contact the manufacturer.

SPECIFICATIONS

Psyche Battery

Dimensions: 133mm (length) x 36mm (width) x 30.3mm (depth)

Weight: 187g

Battery capacity: 3000mAh

Output modes: Wattage Mode

Max charging current: 2.0A

Wattage range: 1 – 80W

Screen size: 0.86in

Tank/Battery connection: 510 connection

Rialto Tank

Maximum tank diameter: 26mm

Tank capacity: 2ml

Filling method: Sliding top fill with locking mechanism

Airflow type: Bottom adjustable

Atomizer head resistance

compatibility: 0.05 – 3.0ohm

Max refill nozzle diameter: 3.2mm

PRODUCT STORAGE AND BATTERY PRECAUTIONS

- Store the Psyche and its accessories away from children when not in use.
- Ensure the Psyche is powered off when not in use.
- Avoid accidentally pressing the Psyche power button when not in use.
- Please only use the charging cable provided.
- Please dispose of dead batteries in accordance with your country's appropriate legislation.
- Do not charge the batteries in a damp environment.
- Do not use the device when temperatures are outside the range -10 - 60°C.
- Do not charge the battery when temperatures are outside the range 0 - 45°C.
- Do not attempt to repair a faulty Psyche as these are sealed units with no serviceable parts. Attempted repairs will void the warranty.

WARRANTY

The Psyche components have a 28-day parts warranty, with the exception of Atomizer Heads, which are consumable items and covered by “dead on arrival” warranty only. The USB cable supplied has a 12-month warranty. If any parts are found to be faulty within this time please contact our customer service team, whose details are on the back page of this booklet and we will arrange for a replacement. We may require the goods to be returned for further investigation.

PSYCHE

PiLLbOX 38

Manufactured in China under the authority of Pillbox38 UK Ltd,
Stancliffe Street, Blackburn, Lancashire, BB2 2QR.



Tel 01254 692244
www.totallywicked.co.uk



Tel 0941-78447082
www.totallywicked.de

