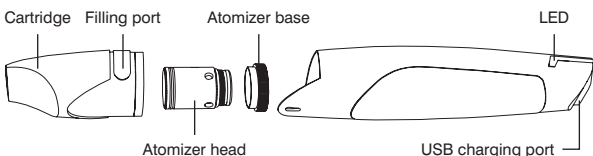




TOTALLY WICKED®

TORNADO EX EDGE

CONGRATULATIONS ON PURCHASING YOUR TOTALLY WICKED TORNADO EX EDGE KIT

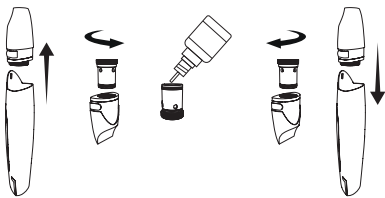


USING YOUR TORNADO EX EDGE

Note: It is important to “prime” a new atomizer head before first use. Failure to do so can cause the atomizer coil to overheat, leading to an unpleasant taste and sometimes irreversible damage to the atomizer head.

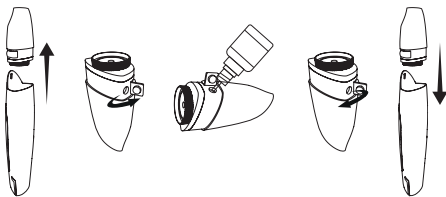
Priming the Atomizer Head

Remove the cartridge from the Tornado EX Edge by pulling straight out. Invert the cartridge and unscrew the atomizer base. Keep the atomizer head attached to the base. Drip a few drops of e-liquid on each of the four e-liquid inlets on the side of the atomizer head, and into its central hole to fully wet the wicking material.



Filling the Tank

With cartridge removed, locate the rubber flap on the side of the cartridge, and lift the edge marked with a droplet symbol. With the filling port now exposed, insert your e-liquid bottle nozzle fully, and fill to leave a minimum air gap of approximately 2mm. Close the flap and reinsert the tank firmly into the Tornado EX Edge.



Note: After priming a new atomizer head and filling the tank, it is recommended to wait 5 minutes to ensure the atomizer head is fully saturated.

Power On and Off

To turn the device on or off, simply press the power button 5 times. The LEDs will flash quickly 3 times to confirm that the on-off state has changed.

Vaping

Press and hold the power button as you inhale the vapour. The LEDs at the bottom of the device will illuminate while the power button is held down to vape.

Battery Level Indication

Approximately one second after the power button is released, the LED will relight to show the battery’s approximate remaining charge as detailed in the table below.

Battery Level	Light Condition
100%-60%	Stays lit for 5 seconds
59%-30%	Flashes slowly
29%-10%	Flashes at a moderate speed
9-0%	Flashes rapidly

Charging the Battery

To charge the battery, connect the charge lead into the USB port on the bottom of the Tornado EX Edge. The LEDs will glow red until fully charged, at which point they will turn off.

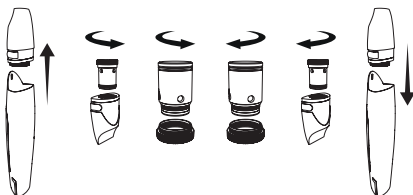


Changing the Atomizer Head

Note 1: Unless the cartridge is less than half full, changing the atomizer head will result in leakage of some of the cartridge contents.

Note 2: The Tornado EX Edge is not compatible with atomizer head resistances lower than 0.8 ohm.

To change the atomizer head in the Tornado EX Edge, remove the cartridge and invert. Unscrew the atomizer base from the cartridge, then unscrew the atomizer head from the base. Screw a new atomizer head into the base and screw the base firmly back into the tank. Please remember that a new atomizer will need priming as described in the "Priming the Atomizer Head" section of the manual.



Short Circuit Protection

If a short circuit occurs before the power button is pressed, the LED will flash 5 times in quick succession. Replacing the atomizer head should allow normal operation to resume. Follow the steps outlined in Replacing the Atomizer Head above.

Atomizer Protection

If the power button is held down for longer than 15 seconds, the device will stop producing any vapour and the power LED will flash 3 times and power off. After releasing the power button the device will need to be turned back on for normal operation to resume.

Low Voltage Protection

If the battery voltage drops below 3.3V, the LED will flash 20 times and the device will power off. Charge the device via USB to power it back on.

Kit Contents

- 1 x Tornado EX Edge battery
- 1 x Cartridge unit
- 2 x MTL 1.2ohm atomizer heads
- 2 x Silicone rings
- 1 x USB cable
- 1 x User manual

Specifications:

- Dimensions: 26mm x 110mm x 20mm
- Battery capacity: 650mAh
- Tank capacity: 2ml
- Voltage Output: 3.3V - 4.2V (Direct)
- Battery Voltage: 3.7V (Nominal)
- Atomizer Resistance Capability: 0.8ohm - 3.0ohm
- Maximum Filling Nozzle Diameter: 3mm

Additional Product Information

There are no reported medical side effects with this product. If you believe you experience a side effect, please contact the manufacturer.

Product Storage and Battery Precautions

- Store the Tornado EX Edge and its accessories away from children when not in use.
- Ensure the Tornado EX Edge is powered off when not in use.
- Avoid accidentally pressing the Tornado EX Edge power button when not in use.
- Please only use the charging cable provided.
- Please dispose of dead batteries in accordance with your country's appropriate legislation.
- Do not charge the batteries in a damp environment.
- Do not use the device when temperatures are outside the range -10 - 60°C.
- Do not charge the battery when temperatures are outside the range 0 - 45°C.
- Do not attempt to repair a faulty Tornado EX Edge as these are sealed units with no serviceable parts. Attempted repairs will void the warranty.

Warranty

The Tornado EX Edge components have a 28-day parts warranty, with the exception of Atomizer Heads, which are consumable items and covered by "dead on arrival" warranty only. The USB cable supplied has a 12-month warranty. If any parts are found to be faulty within this time please contact our customer service team, whose details are on the back page of this booklet and we will arrange for a replacement. We may require the goods to be returned for further investigation.