



TOTALLY wicked®



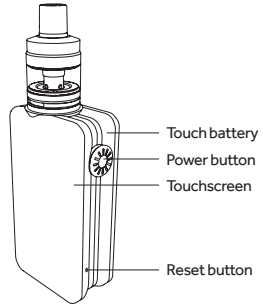
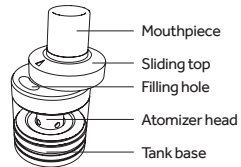
touch

USER MANUAL



CONGRATULATIONS  
ON PURCHASING YOUR  
**TOTALLY WICKED  
TOUCH  
ELECTRONIC  
CIGARETTE KIT**

## THE TOTALLY WICKED TOUCH



## QUICK START GUIDE

If you are familiar with using e-cigarettes, follow the quick start guide below to be vaping in minutes:

- Prime the atomizer head.
- Fill the tank.
- Switch the Totally Wicked Touch on (5 clicks of the power button).
- Set the power to 12 watts
- Press and hold the power button and inhale
- Charge the battery (possibly not shipped with a full charge).

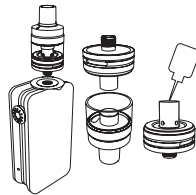
Detailed descriptions of these steps and more are given on the following pages.

## USING YOUR TOTALLY WICKED TOUCH

### PRIMING

It is important to “prime” a new atomizer head before first use. Failure to do so can cause the atomizer coil to overheat, resulting in a burnt taste and sometimes irreversible damage to the atomizer head requiring early replacement.

Unscrew and remove the tank from the battery and invert. Unscrew the base of the tank and prime the atomizer head by dripping a few drops of e-liquid into the central hole of the atomizer head. After priming the atomizer head, screw the base back onto the tank, and screw the tank back onto the battery.

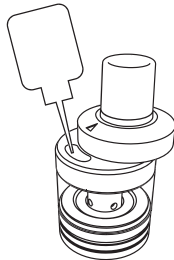


## USING YOUR TOTALLY WICKED TOUCH

### FILLING

Slide the top cap open by pushing firmly in the direction indicated by the arrow on the top cap to expose the fill hole. Insert the filling nozzle into the fill hole and fill the tank, being careful to leave an air gap of approximately 2mm. Slide the top cap shut after filling.

**Note:** After priming a new atomizer head and filling the tank with e-liquid, it is recommended to wait 5 minutes to ensure the atomizer head is fully saturated with e-liquid.



## USING YOUR TOTALLY WICKED TOUCH

### SWITCHING ON AND OFF

Switch the Totally Wicked Touch on by quickly pressing the power button five times, the screen will illuminate, indicating the Totally Wicked Touch has been switched on. Quickly press the power button five times to switch the Totally Wicked Touch off.

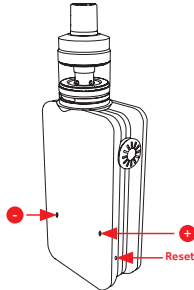
### CHARGING THE BATTERY

The Totally Wicked Touch is charged by connecting the charge port on the battery to a USB port or suitable wall adaptor with the supplied charging lead. The battery icon will begin to flash onscreen. The temperature at charging will be displayed on screen. Once the device reaches 100%, the charging icon will stop flashing.

## USING YOUR TOTALLY WICKED TOUCH

### SETTING THE WATTAGE

The Totally Wicked Touch has adjustable wattage that can be set from 1 – 80 watts. To adjust the wattage, press the power button 3 times, this will unlock the left and right touch sensitive adjustment buttons. Tap or hold the left or right adjustment button to decrease/increase the wattage respectively.



### RESETTING THE DEVICE

If the Totally Wicked Touch becomes unresponsive, the reset button is located below the power button. To reset the Totally Wicked Touch, use a small pin to press the reset button, the screen will flash momentarily and normal vaping will resume.

## USING YOUR TOTALLY WICKED TOUCH

### VAPING

Press and hold the power button as you inhale the vapour, the screen will display a puff timer.

### ADJUSTING AIRFLOW

If you find the air flow too airy or too tight while vaping, rotate the airflow control ring located on the tank base. Experiment by rotating the air flow control ring to find your preferred setting.

### E-LIQUID LEVEL

To prevent the atomizer head from becoming dry and burning prematurely, ensure the amount of e-liquid inside the Totally Wicked Touch EX tank does not drop below the feed holes located on the sides of the atomizer head.

## USING YOUR TOTALLY WICKED TOUCH

### ATOMIZER HEAD LIFESPAN

Atomizer heads do not last forever and need to be periodically replaced. The lifespan of an atomizer head can vary from several days up to several weeks.

Factors affecting lifespan include wattage, vaping style, flavour and type of e-liquid. Indicators that the atomizer head may require replacement include a slight burnt taste, general loss of vapour production or a reduction in flavour intensity.

### REPLACING THE ATOMIZER HEAD

To install a new atomizer head follow the process shown in the “**PRIMING**” section of the manual, and unscrew and replace the atomizer head.

**Reminder: After priming a new atomizer head and filling the tank with e-liquid, it is recommended to wait 5 minutes to ensure the atomizer head is fully saturated with e-liquid.**

## USING YOUR TOTALLY WICKED TOUCH

### CLEANING AND MAINTENANCE

The Totally Wicked Touch battery can be cleaned by wiping down with tissue or a dry cloth. The Totally Wicked Touch EX tank can be cleaned by removing it from the battery, unscrewing the tank base from the glass section of the tank then removing the atomizer head.

The entire Totally Wicked Touch EX tank and base can now be cleaned under hot running water. Allow the tank to fully dry before refitting the atomizer head into the tank base. Reassemble the tank.

**Note: Do not attempt to clean the atomizer head with water. Do not submerge the Totally Wicked Touch battery unit in water or allow it to get wet.**

## SPECIFICATIONS

### Totally Wicked Touch battery

Dimensions: 83mm (height) x 42mm (width) x 28mm (depth)

Weight: 147.5g

Battery Capacity: 4400mAh

Wattage Range: 1 – 80W

Voltage Range: 0.5 – 9V

Maximum Charge Current: 2.0A

Maximum Tank Diameter: 25mm

Thread Type: 510 connection

Atomizer Resistance Compatibility: 0.1 – 3.0ohm

### Totally Wicked Touch EX tank

Dimensions: 22mm (diameter) x 43.5mm (height)

Weight: 42g

Tank Capacity: 2ml

Atomizer Type: EX atomizer heads

Thread Type: 510 connection

Atomizer Head Resistance: 1.2ohm fitted, 0.5ohm available as accessory

Airflow Type: Bottom adjustable

Maximum Refill Nozzle Diameter: 3.5mm

Additional product information

## KIT CONTENTS

1 x Totally Wicked Touch battery

1 x Totally Wicked Touch EX tank

1 x EX 1.2ohm atomizer head (fitted)

1 x EX 1.2ohm atomizer head (spare)

1 x USB-C cable

1 x User manual

Spare parts

## PRODUCT STORAGE AND BATTERY PRECAUTIONS

- Store the Totally Wicked Touch e-cigarette and its accessories away from children whilst not in use.
- Please only use the charging cable provided.
- Please dispose of dead batteries in accordance with your country's appropriate legislation.
- Do not charge the battery in a damp environment, or in temperatures under 0°C or above 45°C.
- Do not use the device in temperatures under -10°C or above 60°C.
- Do not carry batteries in a pocket or bag with other metallic objects.
- Do not attempt to repair a faulty Totally Wicked Touch battery as these are sealed units with no serviceable parts. Attempted repairs will void the warranty.

## WARRANTY

Totally Wicked Touch components have a 28-day parts warranty with the exception of atomizer heads which are consumable items and are covered by our 'Dead on Arrival' warranty only. The USB cable supplied has a 12-month warranty. If any parts are found to be faulty within this time please contact our customer service team, whose details are on the back page of this booklet and we will arrange for a replacement. We may require the goods to be returned for further investigation.

## ADDITIONAL PRODUCT INFORMATION

There are no reported medical side effects with this product. If you believe you experience a side effect, please contact the manufacturer.



# PiLLbOX 38

# touch

Manufactured in China  
under the authority  
of Pillbox38 UK Ltd,  
Stancliffe Street,  
Blackburn, Lancashire,  
BB2 2QR.



Tel 01254 692244  
[www.totallywicked.co.uk](http://www.totallywicked.co.uk)



Tel 1(888) 761-9425  
[www.totallywicked.com](http://www.totallywicked.com)



Tel 0941-78447082  
[www.totallywicked.de](http://www.totallywicked.de)

